

Elna 8300 supplementary instruction

These pages complete the instruction manual for the following update:

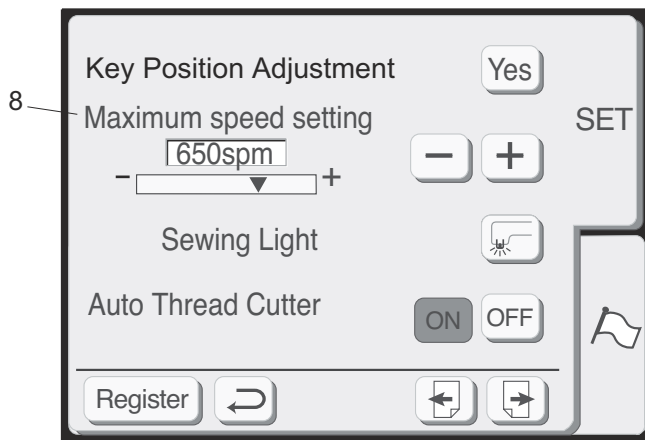
1. Maximum embroidery speed setting

Embroidery speed increases to 750 spm maximum.

2. The use of the optional CD-ROM drive

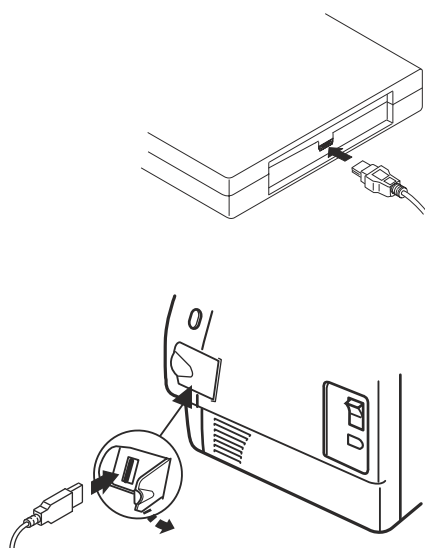
The optional CD-ROM drive can be connected to the machine.

Page 12



8. Set maximum embroidery speed

The embroidery speed can be adjusted from 400 spm to 750 spm maximum. The default setting is 650 spm (stitches per minute). Designs featuring narrow zigzag stitches may need to be sewn at a slower speed for best results. Touch the “–” key to decrease and “+” key to increase.

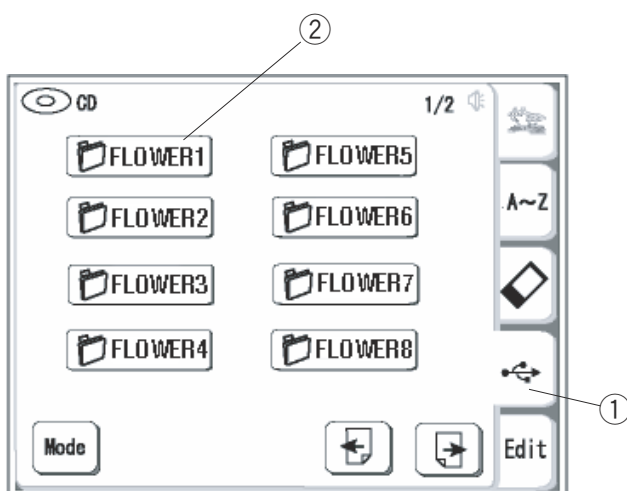


CD-ROM Drive (optional item)

Insert the mini USB connector into the USB port on the back of the CD-ROM drive.

Open the small door on the right side of the machine. Insert the USB cable into the USB port of the machine. The CD-ROM drive does not need external power since it is supplied from the machine via the USB cable.

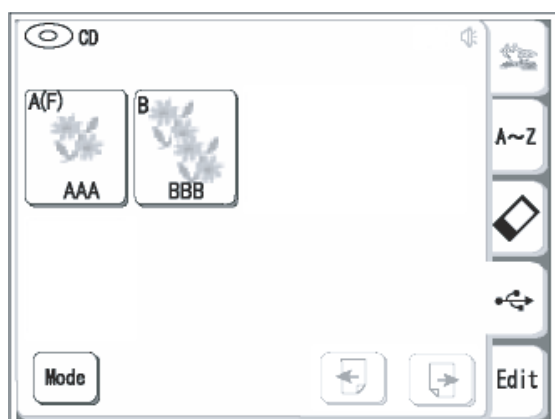
Turn on the machine and insert a CD of embroidery into the CD-ROM drive.



Access the designs from CD-ROM

Press the **USB** tab ①.
The folder list of the embroidery is now displayed.
Press on a folder to open it ②.

- ① USB tab
- ② Folder



The designs contained in the selected folder will be displayed on the **Pattern selection** keys.
Press the **Pattern selection** key to select the desired pattern.

NOTE:

If the size of a motive exceeds the limit of hoops compatible with this model, the icon of the motive will be gray.