

Instructions for Installing Acutools

Computer System Requirements:

- * OS: Windows 8.1 or 8 (32 or 64 bit) or
Windows 7 (32 or 64 bit) or
Windows Vista (32 or 64 bit)
- * CPU: 800MHz minimum (1GHz recommended)
- * Memory : 512MB minimum (1GB recommended)
- * Hard Drive : 600MB minimum free space
- * Video Resolution: 800 x 600 minimum
(1024 x 768 recommended)
- * CD-ROM or DVD drive
- * USB cable and port
- * Mouse or touch pad

This process installs the following software:

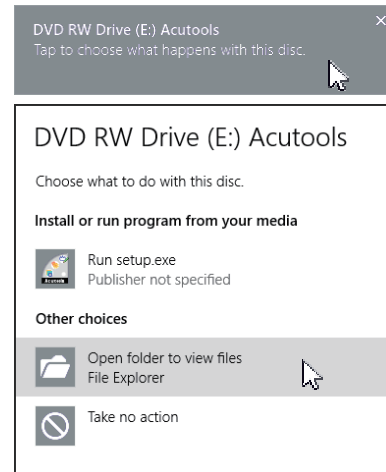
1. StitchComposer
2. EmbroideryEditor
3. ScreenSaver Tool
4. DriverInstaller

- * The following installation example uses a Windows 8.1 OS.
- * You need to log in as [Administrator].
- * For instructions for StitchComposer, EmbroideryEditor, and ScreenSaver Tool, see [Help] in each application.

Copying Acutools folder for a PC without a CD or DVD drive

If your PC is not equipped with a CD or DVD drive, use an external drive. Or using a PC with a CD or DVD drive, copy the [Acutools] folder on the CD-ROM and save it on a USB flash drive with free space of not less than 600MB, according to the following procedure.

1. Insert the [Acutools] CD-ROM into the CD drive of the PC.
2. Click the pop-up message shown below within 5 seconds, then click [Open folder to view files].



- * If the [AutoPlay] window is not shown:

For Windows 8.1:

- 2-1. Open [File Explorer] on Desktop >Click [This PC]
- 2-2. Right-click [CD Drive] and click [Open AutoPlay...] in the menu.

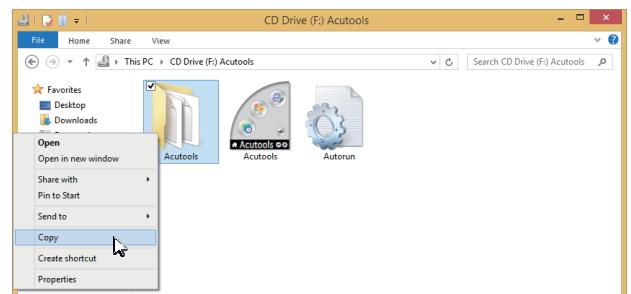
For Windows 8:

- 2-1. Open [File Explorer] on Desktop >Click [Computer]
- 2-2. Right-click [CD Drive] and click [Open AutoPlay...] in the menu.

For Windows 7 or Vista:

- 2-1. Select [Start]>[All Programs]>[Accessories]>[Windows Explorer].
- 2-2. Double click [Computer].
- 2-3. Right-click [CD Drive] and click [Open AutoPlay] in the menu.

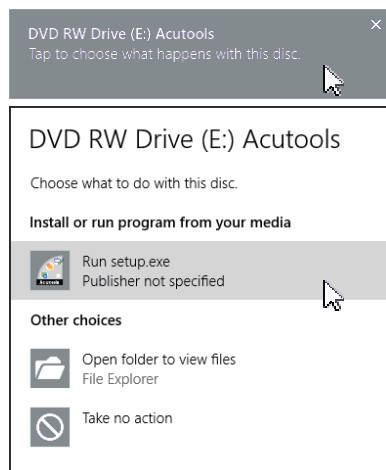
3. Right-click the [Acutools] folder in the CD-ROM and click [Copy] in the menu.



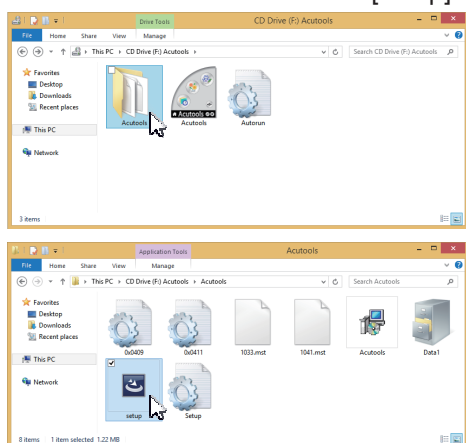
4. Insert the USB flash drive into the PC.
5. Open the USB flash drive and right-click to select [Paste] in the menu.
6. When the copy is saved on the USB flash drive, remove it from the PC.

Installing Acutools

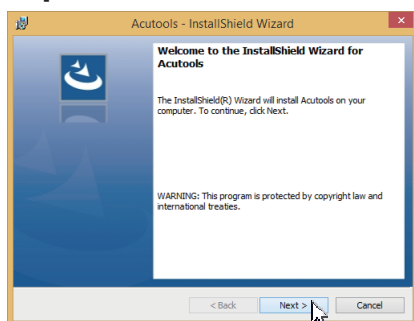
1. Start up your PC and close all other applications before beginning installation.
Insert the [Acutools] CD-ROM into the CD drive.
Click the pop-up message shown below within 5 seconds, then click [Run setup.exe].



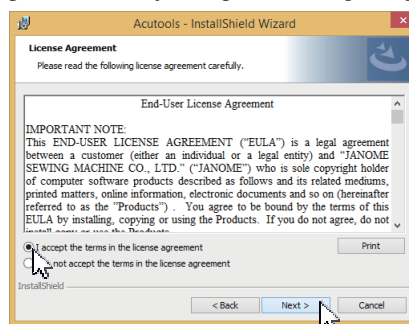
- * If the [Auto Play] window is not shown, open [File Explorer] on Desktop. Click [This PC] and double click [Acutools].
- * For PCs without a CD or DVD drive, insert the USB flash drive into the PC. Open the [Acutools] folder saved on the USB flash drive and double-click [setup].



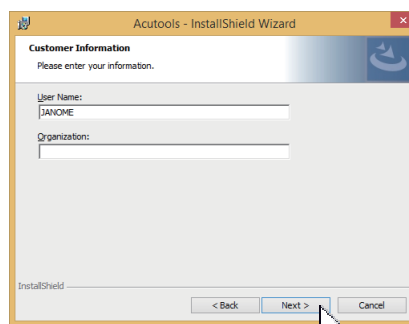
2. The Acutools Setup Wizard starts up automatically.
Click [Next].



3. The end user license agreement (EULA) will appear.
Read the EULA and check "I accept the terms in the license agreement" if you agree. Click [Next].



4. Enter a user name and click [Next].

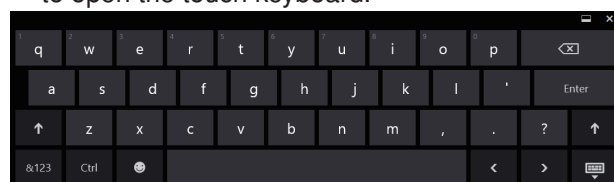


- * For tablet PCs, enter a user name with the touch keyboard (see the following instructions).

For Windows 8/8.1:

4-1. Tap the text box.

4-2. Tap the touch keyboard icon in the desktop taskbar to open the touch keyboard.

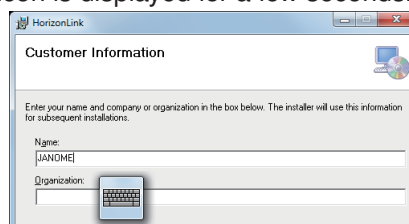


4-3. You can enter a user name using the touch keyboard.

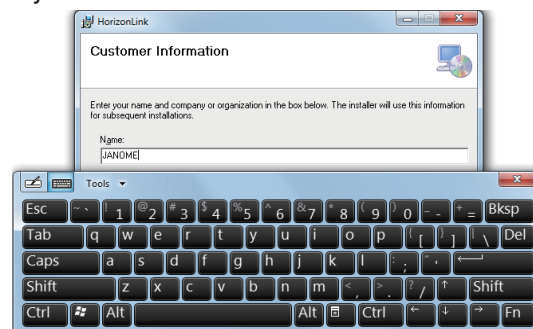
For Windows 7:

4-1. Tap the text box to display the touch keyboard icon.

The icon is displayed for a few seconds.



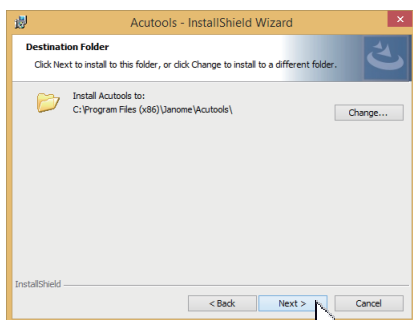
4-2. Tap the touch keyboard icon to open the touch keyboard.



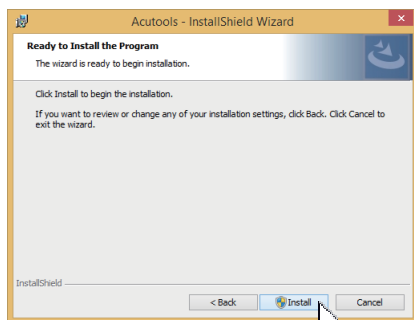
4-3. You can enter a user name using the touch keyboard.

4-4. Tap the X button in the upper right corner of the touch keyboard to close it.

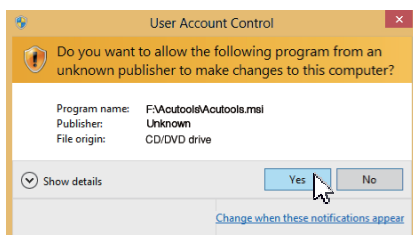
- Click [Next] if you accept the [Acutools] installation location.
* Sample files are installed in the [Acutools] folder under the [Documents] folder.



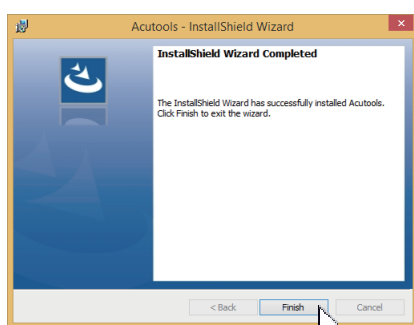
- Click [Install] to start installation.



- [User Account Control] dialog box will open. Enter the password and click [Yes].
* Installation will take 1 – 5 minutes, depending on the specifications of your PC.



- When Acutools is successfully installed, click [Finish] to exit.



- The [Acutools] icon appears on your desktop.



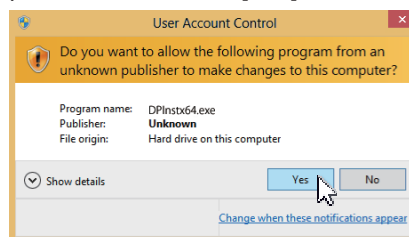
Preinstalling USB Driver

Install the USB driver to transfer embroidery designs from the sewing machine to the PC using the USB cable.

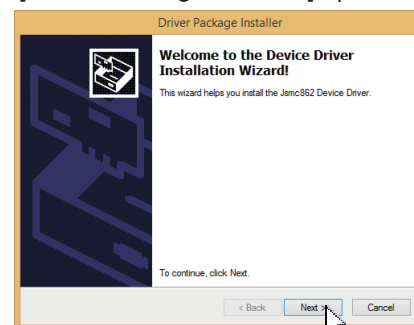
- Double-click the [Acutools] icon on the desktop and click the [DriverInstaller].



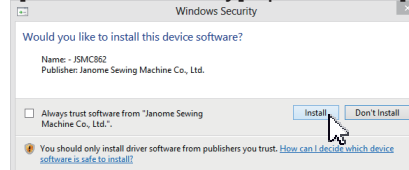
- When the [User Account Control] dialog box opens, enter the password and click [Yes].



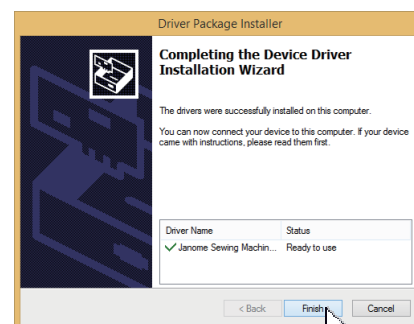
- When the [Driver Package Installer] opens, click [Next].



- When the [Windows Security] opens, click [Install].



- When the Driver Installation is successfully preinstalled, click [Finish].



- When connecting your PC to your Sewing machine for the first time, [USB Driver] is installed automatically.

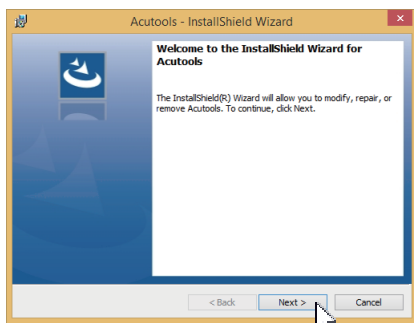
* Refer to the instruction book of the sewing machine for how to connect the PC and the sewing machine.

Installing Sample Data into Other Accounts

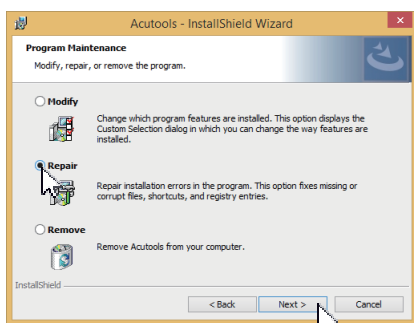
Sample data is installed only in [Acutools] folder under [Documents] of the account of a user who installed [Acutools]. Other users need to install the sample data to one's account.

If you use sample data, install using the following process.

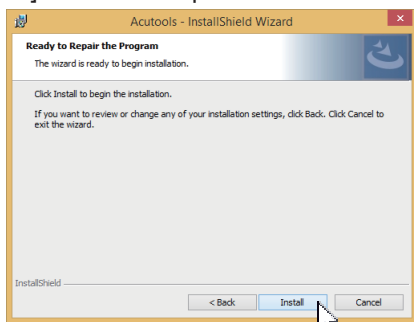
1. Log in the PC under your account.
2. Insert the [Acutools] CD-ROM into the CD drive and [Install Shield Wizard] starts automatically.
3. Click [Next].



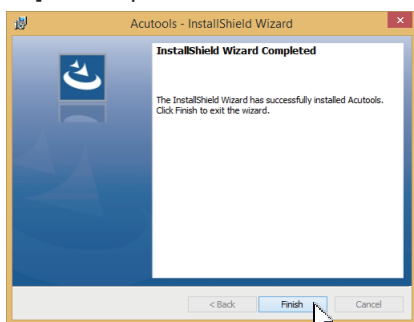
4. Select [Repair] and click [Next].



5. Click [Install] and the sample data will be installed.



6. Click [Finish] to complete installation.



Language selection

You can select English or Japanese as the display language for Acutools.

When English or Japanese is selected, the language for all software included in Acutools changes.



However, any parts dependent on the os language, remain unchanged.

Example: "Yes" or "No" buttons in message boxes.

1. Close all of the software in Acutools. (The selected language will be displayed the next time the software is started.)

2. Language selection menu

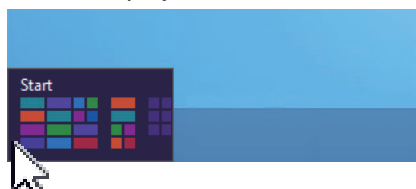
Windows 8.1:

- 2-1. Click the  button on the bottom left corner of the screen to display the Start screen.
- 2-2. Click the  button on the bottom left corner of the start screen to display the Apps view. The [Acutools] group is displayed in the Apps view.



Windows 8:

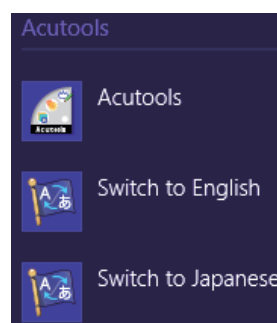
- 2-1. Move the cursor to the bottom left corner of the screen to display the start menu thumbnail. Click the thumbnail to display the start menu.




- 2-2. Right-click the bottom part of Start screen to display the application bar.

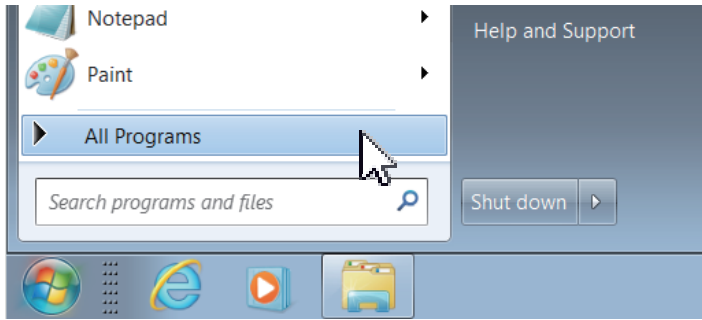


- 2-3. Click [All apps] on the application bar. [Acutools] group is displayed in the Apps view.

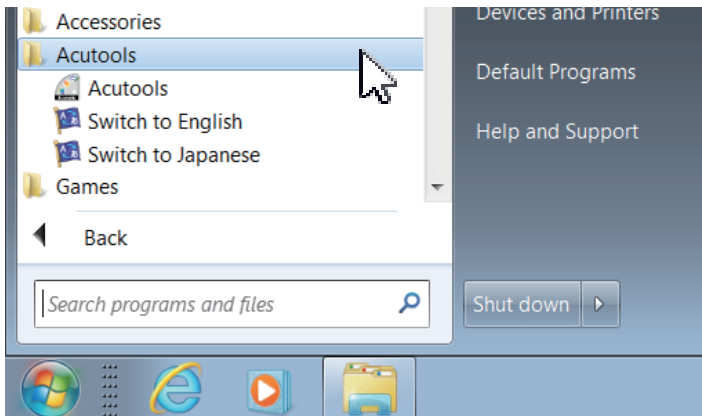


Windows 7 / Windows Vista:

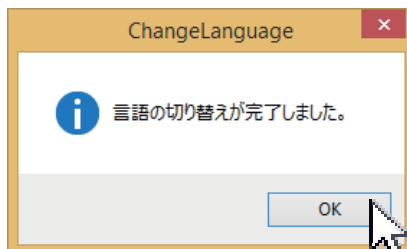
- 2-1. Click  on the bottom left corner of the screen and select [All Programs].



- 2-2. Click the [Acutools] folder to display the language selection menu.



3. Select [Switch to Japanese] to change the language to Japanese. The confirmation message will be displayed in Japanese.



4. Select [Switch to English] to change the language to English. The confirmation message will be displayed in English.

